



# Price List

## STEEL

## SLIDING DOORS

**MAGNETYT**

[For specs click HERE](#)

**Closets**  
**Wall Units**



**KOMANDOR**

Prices valid until Dec 31, 2025

## INTRODUCTION – Using this Guide

### Systems have been priced out using:

- the most common measurements to estimate costs
- includes doors and top & bottom track
- no decorative trims (mullions or joiner rails)
- Frame Finish **BASE** colours
- Insert **BASE** colours
- Please apply % increase to the original base price for other options as listed
- widths and heights indicate finished openings
- width: minimums and maximums
- height: maximums



**All sliding doors are measured, designed & fabricated to the 1/32"**

# Industry Professionals Trade Pricing

The Industry Professional placing the order may take their Trade Pricing discount off the full MSRP of product listed in this Price Guide (delivery and install excluded).

Prices are listed at full MSRP in the guide and do not include taxes.

Charges for freight, crating (if applicable) and brokerage for out of area orders apply, please inquire for a quote.

# MAGNETYT

system

## Frame Finish Options



**BASE**  
as priced

**Matt  
Silver**

- anti-jumping function protects the door against falling out of the bottom track
- buffer strips with short and long hair reduce vibrations when closing the door and protect the interior against dust
- rollers equipped with bearings ensure light door sliding with ease
- quiet work of the running gear
- possibility of using the door closers ensuring soft closing of the door



### PROFILE COLORS

silver



# MAGNETYT - Bi-Pass steel sliding doors

# PANEL INSERT



## Panel Options



**BASE**  
as priced

Black Grain  
Black VL  
Grey  
White (Aspen)  
White Polar

Opening Width	Number of Doors	Price up to 84" Height	Price up to 110" Height
43-48"	2	\$1,300	\$1,375
48-60"	2	\$1,425	\$1,525
60-72"	2	\$1,525	\$1,625
72-84"	2	\$1,650	\$1,775
84-96"	2	\$1,775	\$1,900
84-96"	3	\$2,200	\$2,325
96-108"	3	\$2,275	\$2,425
108-120"	3	\$2,425	\$2,600
120-132"	3	\$2,525	\$2,700
132-144"	3	\$2,675	\$2,875
132-144"	4	\$3,050	\$3,250
144-156"	4	\$3,200	\$3,425
156-168"	4	\$3,300	\$3,525
168-180"	4	\$3,375	\$3,625
180-196"	5	\$4,025	\$4,300

## +3% on base

Alderwood  
Ancient Oak  
Beech  
Vanilla  
Walnut

## +5% on base

Antique Oak  
Bergamo Elm  
Chocolate Pine  
Cortona Oak  
Dark Walnut

Lucerne Elm  
Mali Weng  
Metallic  
Natural Maple  
Nicea Walnut

Palermo Dark Oak  
Palermo Light Oak  
Pine  
Rijeka Oak  
Sonoma Oak

White Alaskan  
Whitewashed Pine  
White Porcelain

## Hardware Upgrades

- \* Soft close mechanisms
- \* Horizontal woodgrain
- \* Horizontal mullion dividers
- \* Combine different inserts

# MAGNETYT - Bi-Pass steel sliding doors

# MIRROR INSERT



## Mirror Options



UC 002/3/4/6-T  
2mm, 3mm, 4mm, 6mm



UC 300/600B-T  
3mm, 6mm



UC 600GRY-T  
6mm

**BASE**  
as priced

Silver (clear)

+12% on base

Bronze (brown tinted)

+45% on base

Graphite (gray tinted)

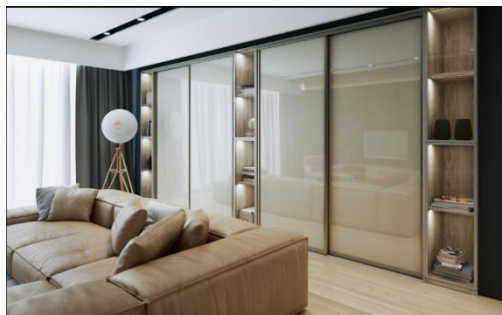
Opening Width	Number of Doors	Price up to 84" Height	Price up to 110" Height
43-48"	2	\$1,500	\$1,625
48-60"	2	\$1,675	\$1,825
60-72"	2	\$1,800	\$2,000
72-84"	2	\$1,975	\$2,200
84-96"	2	\$2,150	\$2,400
84-96"	3	\$2,575	\$2,825
96-108"	3	\$2,700	\$3,000
108-120"	3	\$2,900	\$3,225
120-132"	3	\$3,050	\$3,400
132-144"	3	\$3,250	\$3,625
132-144"	4	\$3,625	\$4,000
144-156"	4	\$3,825	\$4,250
156-168"	4	\$3,975	\$4,425
168-180"	4	\$4,100	\$4,600
180-196"	5	\$4,800	\$5,350

## Hardware Upgrades

- \* Soft close mechanisms
- \* Horizontal mullion dividers
- \* Combine different inserts



# MAGNETYT - Bi-Pass steel sliding doors



## Antique Mirror Options



UG KAPA CLEAR  
4mm



UG ZUMRE CLEAR  
4mm



UG KAPA BRONZE  
4mm



UG ZUMRE CLEAR  
4mm



UG NIDA BRONZE  
4mm



UG LAVA CLEAR  
4mm

**BASE**  
as priced

Nida Clear  
Nida Bronze  
Kapa Clear  
Kapa Bronze  
Zumre Clear  
Lava Clear

# ANTIQUE MIRROR INSERT

Opening Width	Number of Doors	Price up to 84" Height	Price up to 110" Height
43-48"	2	\$2,450	\$3,100
48-60"	2	\$2,875	\$3,650
60-72"	2	\$3,250	\$4,150
72-84"	2	\$3,650	\$4,700
84-96"	2	\$4,075	\$5,225
84-96"	3	\$4,525	\$5,750
96-108"	3	\$4,875	\$6,225
108-120"	3	\$5,325	\$6,800
120-132"	3	\$5,700	\$7,325
132-144"	3	\$6,150	\$7,875
132-144"	4	\$6,525	\$8,325
144-156"	4	\$6,975	\$8,925
156-168"	4	\$7,350	\$9,425
168-180"	4	\$7,725	\$9,900
180-196"	5	\$8,775	\$11,225

## Hardware Upgrades

- \* Soft close mechanisms
- \* Horizontal mullion dividers
- \* Combine different inserts

Pricing for 110" high openings includes one joiner rail since antique mirror sheets are only 98" long

# MAGNETYT - Bi-Pass steel sliding doors



## Backpainted Glass Options



UG BP004BLK-T  
4mm



UG BP004EXW  
4mm

**BASE**  
as priced

- Backpainted
- various colours including white, black, and a dozen other colours
  - ultra-clear

+7% on base  
Starlight Black

+27% on base  
Matalac (matte finish)

# BACKPAINTED GLASS INSERT

Opening Width	Number of Doors	Price up to 84" Height	Price up to 110" Height
43-48"	2	\$1,825	\$2,250
48-60"	2	\$2,075	\$2,600
60-72"	2	\$2,300	\$2,875
72-84"	2	\$2,550	\$3,225
84-96"	2	\$2,800	\$3,550
84-96"	3	\$3,250	\$4,050
96-108"	3	\$3,450	\$4,325
108-120"	3	\$3,750	\$4,725
120-132"	3	\$3,950	\$5,000
132-144"	3	\$4,250	\$5,375
132-144"	4	\$4,625	\$5,800
144-156"	4	\$4,925	\$6,175
156-168"	4	\$5,125	\$6,475
168-180"	4	\$5,350	\$6,775
180-196"	5	\$6,175	\$7,775

## Hardware Upgrades

- \* Soft close mechanisms
- \* Horizontal mullion dividers
- \* Combine different inserts

Pricing for 110" high openings includes one joiner rail since painted glass sheets are only 100" long

Prices in this Guide are for estimation purposes, for firm pricing connect with us for a quote.



**KOMANDOR CANADA CLOSETS & DOORS INC.**  
863 Rangeview Rd., Mississauga, ON L5E 1H1  
tel: 905.766.0880 [www.komandor.ca](http://www.komandor.ca)